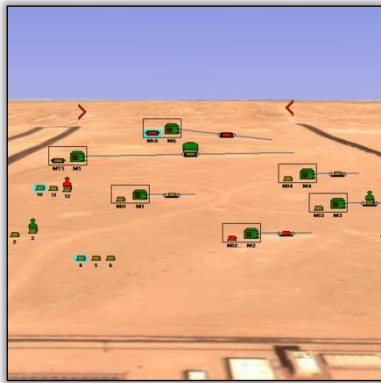




Saving Time and Effort



TRAINING AREA CONTROL FACILITY (TACF) RANGE CONTROL SOFTWARE TYPE 272-001

The MSI TACF Software enables the control as well as the status monitoring of all target appliances on the shooting range.

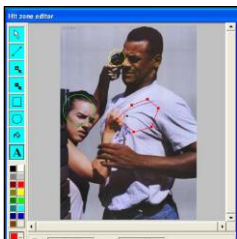
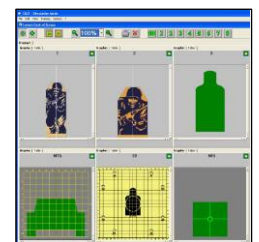
It displays the training area graphically on monitors and reports the hit data for each appliance. Tools and functions are clear and accessible, allowing for a smooth, flowing work environment.

This intuitive software is easy to use and can be learnt quickly by any user, saving time and effort on all projects.

CLEAR AND ACCESSIBLE

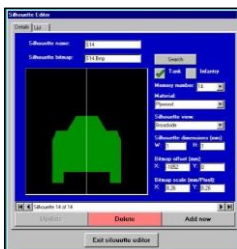
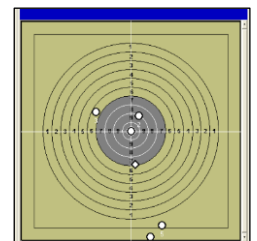
SOFTWARE

- **Windows Compatibility** of TACF means that it works with all state computers operating in this environment.
 - **Communication** to the targets on the range can be hardwired via cable (RS-485, Ethernet) or wireless (WLAN, XBee, or customized radio).
- Target & device control** of nearly all MSI range equipment is done by TACF. Presentation and movement, along with grouping capabilities, of target systems are key settings that TACF controls.



- **Three different, password-protected user levels** – Supervisor, Instructor, and Operator – keeps more complex and security relevant data separate from the day-to-day control operations. This separation allows the different skills required at each level to be learned more quickly.
- **Several Editors** allows for easy program adaptability. Range layout creation and manipulation is simply with this open type architecture.

- **Programmable Scenarios** such as preconfigured firing sessions can be controlled on a time base or by event, with the ability to be started, paused, and cancelled at any time. Learning a script language is not required.
- **Large Scenarios** can be split into engagements that can be started individually or in a linked list.
- **Simulation mode** allows training scenarios to be tested on the computer before running them on the range. This is particularly helpful in preventing equipment damage when training new TACF users, or briefing trainees.



- **Training review** is enabled by the recording of session data on an integrated software recorder. Scenarios can be played, paused, cancelled, and rewind, with all shooting results being stored in a database for a later evaluation or printout.
- **Built-in tests** are performed by TACF at start-up. Checks are performed on the communication and all components of the range. Diagnostic test results are reported and errors are stored in a log-file.

USED WITH



Location of Miss and Hit (LOMAH) Type 240 – Type 243



Mobile Tablet PC Type 274-001



Shooters Monitor Type 292-001

MS Instruments Ltd.

Unit 4, Ravensquay Business Centre, Cray Avenue
 Orpington, Kent, BR5 4BQ, United Kingdom
 Tel: +44 (0)1689 883 020
 Fax: +44 (0)1689 871 392
 contact@msinstruments.co.uk
 www.msinstruments.co.uk

ISO 9001 SCS cert. No. 980010
 272-001-trainingareacontrolfacilityrangecontrolsoftware - Jul-17

The information in this document is correct at the stated time. MS Instruments Ltd has a policy of continuing development and reserves the right to make design changes/improvements to the products.