



## Lightweight, Rugged Control



### MOBILE TABLET PC TYPE 274-001

Designed for mobile use, this mobile tablet pc is a very rugged range control system, fully sealed to handle all outdoor situations.

This slim, rugged, lightweight design has been ergonomically optimized with power-efficient, dual, hot-swappable batteries and a sunlight viewable display. The system is also built with an integrated handle and rubber hand strap.

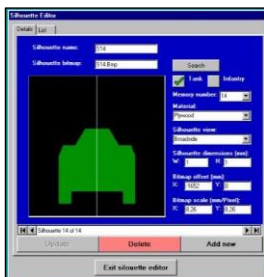
This tablet PC, specifically designed for military use, can remotely operate a vast array of targeting and scoring systems, which MSI can also supply.

With a schematic display of all target systems and an integrated software recorder to store all training session data, this tablet is made to perform with consistently high standards and to be easy to use for all users.

## SLIM, RUGGED, LIGHTWEIGHT

### Ruggedized System:

- Endures environmental and physical stress.
- Durable battery.
- For all training conduct.

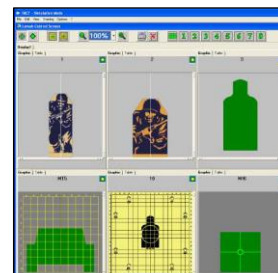


### Several Editors:

- Open type architecture.
- Adaptable for each individual.
- Easily customisable range layouts.

### Easy to Use:

- User-friendly and intuitive handling.
- Fast to learn.
- Intelligent, accessible software.



## HARDWARE

- **10.4" touch display** with the slim, lightweight design and sunlight-viewable display is suitable for all situations and allows for great versatility.
- **Vehicle dock and vehicle power module** allows for mobile application of the tablet.
- **CPU, Memory, and Storage** are all specified to leave the user with smooth use and never be left wanting more.

## SOFTWARE (IF REQUIRED)

- **MSI Range Control Software** enables individual control of all target devices.
- **All live fire training range equipment** supplied by MSI can be controlled with this tablet.

## SPECIFICATION

CONFIGURATIONS	
<b>Power Supply</b>	Internal Lithium Polymer battery, 3800mAh, 7.4V
<b>AC Adapter</b>	AC 100 ~ 240 V, 50 ~ 60 Hz input; 19 VDC @ 3.42A (65W)
<b>Battery Type</b>	Hot swappable dual battery
<b>Battery Life</b>	Up to 8 hours
<b>Communication</b>	Wi-Fi IEEE 802.11 a/b/g/n and Bluetooth 4.0
HARDWARE	
<b>CPU</b>	Intel® Atom™ 1.6GHz Dual Core Processor
<b>Memory</b>	2GB DDR III
<b>Storage</b>	32GB SATA
<b>Display</b>	10.4-inch LED backlight screen
<b>Display Resolution</b>	1024 x 768 XGA
<b>Display Brightness</b>	350nits / optional 500nits for sunlight readable
<b>Military Standard</b>	MIL-STD-810G, MIL-STD-461F
SOFTWARE	
<b>Operating System</b>	Windows 7 Professional
<b>Application Software</b>	MSI TACF Range Control Software

ENVIRONMENT	
<b>Operating Temperature</b>	-20°C - +70°C [-4 °F - +158 °F]
<b>Storage Temperature</b>	-30°C - +70°C [-22 °F - +158 °F]
<b>Humidity</b>	5 – 95 % without condensation
<b>Enclosure Type</b>	IP 65
DIMENSIONS	
<b>L x W x H</b>	203.6mm x 275.4mm x 26.5mm [8.01in x 10.84in x 1.04in]
<b>Weight</b>	1.1kg [2.42lbs]

### Additional Accessories

- Desktop Dock
- Vehicle Dock
- Battery Charger
- External Battery
- Hand Strap
- Stylus
- GPS
- MBR
- Barcode Scanner

## USED WITH



Location of Miss and Hit (LOMAH)  
Type 240 – Type 243



Training Area Control Facility (TACF)  
Range Control Software Type 272-001



Stationary Infantry Target (SIT)  
Type 282 – Type 285

# MS INSTRUMENTS Range Consultancy

Precision, Expertise, Quality

- Professional Bespoke Range Designs
- State-of-the-Art Product Rendering
- Only the Latest Standards

### MS Instruments Ltd.

Unit 4, Ravensquay Business Centre, Cray Avenue  
Orpington, Kent, BR5 4BQ, United Kingdom  
Tel: +44 (0)1689 883 020  
Fax: +44 (0)1689 871 392  
contact@msinstruments.co.uk  
www.msinstruments.co.uk

ISO 9001 SCS cert. No. 980010  
274-001-mobiletabletpc - Jul-17

The information in this document is correct at the stated time. MS Instruments Ltd has a policy of continuing development and reserves the right to make design changes/improvements to the products.