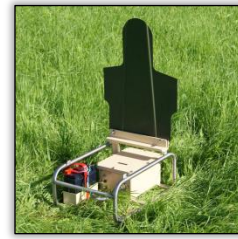




Precision Shooting for Infantry Targets



STATIONARY INFANTRY TARGET (BASIC POPUP) TYPE 282-001

The newly improved Basic Popup Stationary Infantry Target with its time-tested and continuously improved lifting mechanism was designed as a standard pop-up target on live-fire ranges.

The lifter with its configurable target controller and its target mechanism offers a unique combination of flexibility, excellent reliability and safe, easy handling.

The following target presentations are possible:

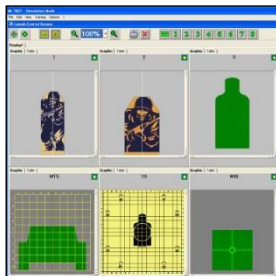
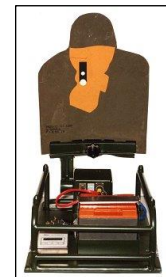
1. Hiding and exposing the target silhouette
2. Lowering the target after registration of a hit
3. Lowering the target after registration of a hit and automatically re-exposing the silhouette

This conveniently portable, rugged system, in the absence of wind, is capable of raising military standard target silhouettes in less than one second and is an essential component of any modern training facility.

SAFE AND RUGGED

Long-lasting and Robust Operation:

- Finest materials
- Outstanding performance
- Usable in difficult environmental conditions

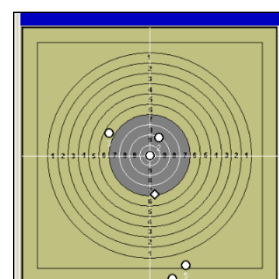


Efficient and Optimised System:

- Powerful engine
- Optimal hit sensing
- No site preparation required

Time and Effort Saving:

- Trouble free functionality
- Excellent reliability
- Immediate performance feedback



HARDWARE

- **Powerful electric engine** with a robust gear easily lifts the full range of infantry targets.
- **Contact hit sensor** records the hits of all calibres of live-fire ammunition. It has a sensitivity adjustment to record hits of training ammunition.
- **Handheld controller** can be used to operate the system, enabling communication and immediate performance feedback over long distances depending on customer's radio frequency and geographic conditions.
- **Range control system** can operate all target systems instead. This can be hardwired or radio linked, simultaneously providing details of each single target mechanism and a supreme overview of the whole scenario.
- **Smooth-edged frame** accommodates all main components that require operation whilst offering easy and safe handling to service personnel. It can be easily carried by two men and hence repositioned to modify training scenarios.

SPECIFICATION

CONFIGURATIONS	
Installation	Portable
Power Supply	Battery-powered
Power Supply (Target Mechanism)	Battery / Solar Panel
Power	12 VDC
Communication	Radio-controlled
HIT SENSING	
Hit Detection	Contact Hit Sensor
Hit Frequency	1200rpm
TARGET PRESENTATION	
Modes of Operation	Pop-up
Time to Expose*	1.2 s
Time to Retreat*	1.2 s
*May vary depending on customer requirements and target dimensions	
TARGET MECHANISM	
Angles of Operation (Lifter)	90°, end positions adjustable

Torque at Shaft	80 Nm
ENVIRONMENT	
Operating Temperature	-25°C - +72°C [-13°F - +161.6°F]
Enclosure Type	IP 67
DIMENSIONS	
L x W x H	750mm x 400mm x 350mm [29.53in x 15.75in x 13.78in]
Weight	17kg [37.48lbs]
Weight with Battery	23kg [50.71lbs]

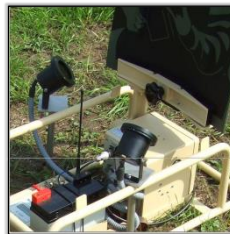
Additional Equipment

- Ballistic Shield
- Enemy Fire Simulators (Pyro & Non-Pyro)
- LOMAH Sensor System
- Muzzle Flash Simulator
- Rotary Pop-Up Adaptor
- Solar Panels
- Target Illumination Unit
- Thermal Target Adaptor

USED WITH



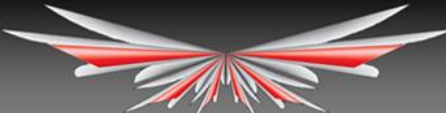
Battle Effects Simulator (BATES) Type 220-221



Muzzle Flash Simulator Type 223-001




Location of Miss and Hit (LOMAH) Type 242-243



MS INSTRUMENTS Range Consultancy

Precision, Expertise, Quality

- Professional Bespoke Range Designs
- State-of-the-Art Product Rendering
- Only the Latest Standards



MS Instruments Ltd.

Unit 4, Ravensquay Business Centre, Cray Avenue
Orpington, Kent, BR5 4BQ, United Kingdom
Tel: +44 (0)1689 883 020
Fax: +44 (0)1689 871 392
contact@msinstruments.co.uk
www.msinstruments.co.uk

ISO 9001 SCS cert. No. 980010
282-101-stationaryinfantrytarget-basicpopup - Jul-17

The information in this document is correct at the stated time. MS Instruments Ltd has a policy of continuing development and reserves the right to make design changes/improvements to the products.