



STATIONARY INFANTRY TARGET (TURNING POPUP) TYPE 283-611

Precision Shooting for Infantry Targets



STATIONARY INFANTRY TARGET (TURNING POPUP) TYPE 283-611

The MSI Turning Popup Stationary Infantry Target combines the advantages of our Stationary Infantry Target with one of our Popup Turning Adaptor. This combination provides soldiers and trainers with a modular and highly flexible training tool to improve live-fire training skills along with vital friend/foe discrimination techniques.

The extraordinarily energy efficient lifter with its configurable target controller and its target mechanism offers a unique combination of flexibility, excellent reliability and safe, easy handling.

The following target presentations are possible:

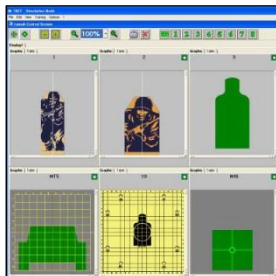
1. Hiding and exposing the target silhouette
2. Lowering the target after registration of a hit
3. Lowering the target after registration of a hit and automatically re-exposing the silhouette
4. Showing the Friend side of a target silhouette
5. Showing the Foe side of a target silhouette
6. Showing the Neutral side (Edge) of a target silhouette

This conveniently portable, rugged system, in the absence of wind, is capable of raising military standard target silhouettes in less than one second and is an essential component of any modern training facility.

SAFE AND RUGGED

Long-lasting and Robust Operation:

- Finest Materials.
- Outstanding performance.
- Usable in difficult environmental conditions.

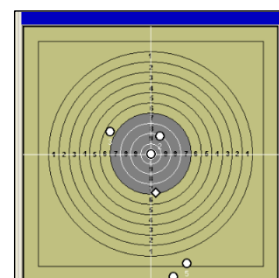


Efficient and Safe Scoring:

- Powerful engine
- Optimal hit sensing
- Energy efficient

Time and Effort Saving:

- Trouble free functionality
- Excellent reliability
- Immediate performance feedback



HARDWARE

- **Powerful electric engine** with a robust gear easily lifts the full range of infantry targets.
- **Popup Turning Adaptor** turns a silhouette independently and enables the appearance of the front, back, and side of a friend/foe silhouette to train target discrimination and immediate reaction.
- **Contact hit sensor** records the hits of all calibres of live-fire ammunition. It has a sensitivity adjustment to record hits of training ammunition.
- **Handheld controller** can be used to operate the system, enabling communication and immediate performance feedback over long distances depending on customer's radio frequency and geographic conditions.
- **Range control system** can also operate all target systems. This can be hardwired or radio linked, simultaneously providing details of each single target mechanism and a supreme overview of the whole scenario.
- **Stable, steadfast, and smooth-edged frame** offers easy and safe handling to service personnel and accommodates all main components needed to be operated.
- **Location can be altered** without the need for infrastructure adaptations.

SPECIFICATION

CONFIGURATIONS	
Installation	Portable
Power Supply	Battery-powered
Power Supply (Target Mechanism)	Battery / Solar Panel
Power	12 VDC
Communication	Radio-controlled
HIT SENSORING	
Hit Detection	Contact Hit Sensor
Hit Frequency	1200rpm
TARGET PRESENTATION	
Modes of Operation	Pop-up, Friendly/Foe, Pop-up Turning
Time to Expose*	0.8 s
Time to Retreat*	0.8 s
*May vary depending on customer requirements and target dimensions	
TARGET MECHANISM	
Angles of Operation (Lifter)	90°, end positions adjustable
Angles of Operation (Turner)	180°

Torque at Shaft	80Nm
ENVIRONMENT	
Operating Temperature	-25°C - +72°C [-13°F - +161.6°F]
Enclosure Type	IP 67
DIMENSIONS	
L x W x H	650mm x 450mm x 250mm [25.59in x 17.72in x 9.84in]
Weight	25kg [55.12lbs]
Weight with Battery	32kg [70.55lbs]

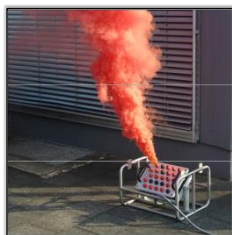
Portability

- **No site preparation is necessary or required to emplace the system.**
- **Target can be conveniently carried by two men and hence repositioned to easily modify the training scenarios.**

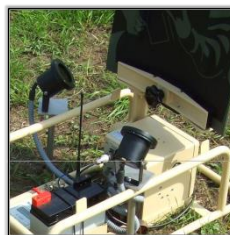
Additional Equipment

- **Ballistic Shield**
- **Enemy Fire Simulators**
- **LOMAH Sensor System**
- **Muzzle Flash Simulator**
- **Rotary Pop-Up Adaptor**
- **Solar Panels**
- **Target Illumination Unit**
- **Thermal Target Adaptor**

USED WITH



Battle Effects Simulator (BATES) Type 220-221



Muzzle Flash Simulator Type 223-001



Location of Miss and Hit (LOMAH) Type 242-243

MS Instruments Ltd.

Unit 4, Ravensquay Business Centre, Cray Avenue
Orpington, Kent, BR5 4BQ, United Kingdom
Tel: +44 (0)1689 883 020
Fax: +44 (0)1689 871 392
contact@msinstruments.co.uk
www.msinstruments.co.uk

ISO 9001 SCS cert. No. 980010
283-611-stationaryinfantrytarget-turningpopup - Jul-17

The information in this document is correct at the stated time. MS Instruments Ltd has a policy of continuing development and reserves the right to make design changes/improvements to the products.