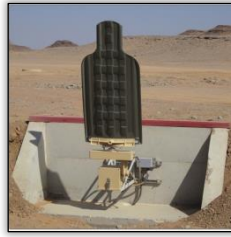




STATIONARY INFANTRY TARGET (ADVANCED TURNING) TYPE 286-001

Precision Shooting for Infantry Targets



STATIONARY INFANTRY TARGET (ADVANCED TURNING) TYPE 286-001

The Advanced Turning Stationary Infantry Target with its unique Target Cube® drive is designed as a multifunctional infantry target mechanism.

The target system with its stainless steel frame, configurable target controller, and powerful electric engine offers a unique combination of flexibility, excellent reliability, and safe, easy handling. In the standard configuration, the system lifts and lowers the full range of military target silhouettes.

The following target presentations are possible:

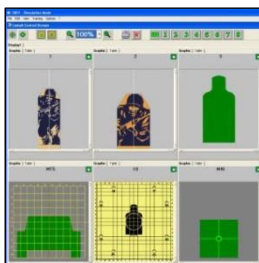
1. Turning the target while lifting and lowering the silhouette and in recessed position
2. Lifting and lowering the target without turning the silhouette
3. Turning the target to friend or foe view
4. Turning the target to neutral view
5. Random and automatic mode

With MSI adaptors, this device is easily convertible to carry out slashing, swivelling, turning, and popup turning actions.

ROBUST AND SLEEK

Long-lasting and Robust Operation:

- Finest Materials.
- Outstanding Performance.
- Usable in difficult environmental conditions.

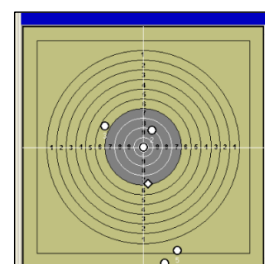


Efficient and Safe Scoring:

- Powerful engine
- Optimal hit sensing
- Energy efficient

Time and Effort Saving:

- Trouble free functionality.
- Excellent reliability
- Immediate Performance Feedback



HARDWARE

- **Contact hit sensor** records the hits of all calibres of live-fire ammunition. It has a sensitivity adjustment to record hits of training ammunition.
- **Freely programmable target actions** are available to create interactive response to events in the field.
- **Handheld controller** can be used to operate the system, enabling communication and immediate performance feedback over long distances depending on customer's radio frequency and geographic conditions.
- **Range control system** can operate all target systems instead. This can be hardwired or radio linked, simultaneously providing details of each single target mechanism and a supreme overview of the whole scenario.
- **Smooth-edged frame** offers easy and safe handling to service personnel.

SPECIFICATION

| CONFIGURATIONS | |
|--|--|
| Installation | Portable or fixed-installed |
| Power Supply | Battery-powered or hardwired |
| Power Supply (Target Mechanism) | Hardwired / Battery / Solar Panel (optional) |
| Power | 240 VAC / 12 VDC, others on request |
| Communication | Remote-controlled or landline-controlled |
| HIT SENSING | |
| Hit Detection | Contact Hit Sensor |
| Hit Frequency | Up to 1200rpm |
| Firing Modes | Single / Burst |
| TARGET PRESENTATION | |
| Modes of Operation | Popup Turning, Popup, Shearing |
| Available Adaptors | Turning, Slashing, Climbing, Sliding |
| Time to Expose* | 0.8s |
| Time to Retreat* | 0.8s |
| *May vary depending on customer requirements and target dimensions | |
| TARGET MECHANISM | |
| Angles of Operation (Lifter) | 90°, end positions adjustable |

| ENVIRONMENT | |
|------------------------------|--|
| Operating Temperature | -25°C - +72°C [-13 °F - +161.6 °F] |
| Enclosure Type | IP 67 |
| DIMENSIONS | |
| L x W x H | 725mm x 400mm x 345mm [28.5 in x 15.7in x 13.6in] |
| Weight | 21kg [46.3 lbs] |
| Weight (with battery) | 28kg [61.7 lbs] |

Operational Settings

- System permanently communicates with the range controller.
- Various settings to modify training scenarios e.g. *presentation time, hits to kill, hit counting mode*.
- Built-In-Test status identification, an initial status information and operational feedback to the range controller.

Additional Equipment

- Ballistic Shield
- Enemy Fire Simulators (Pyro & Non-Pyro)
- LOMAH Sensor System
- Muzzle Flash Simulator
- Target Illumination Unit
- Thermal Target Adaptor

USED WITH



Battle Effects Simulator (BATES) Type 220-221



Muzzle Flash Simulator Type 223-001



Location of Miss and Hit (LOMAH) Type 242-243

MS Instruments Ltd.

Unit 4, Ravensquay Business Centre, Cray Avenue
Orpington, Kent, BR5 4BQ, United Kingdom
Tel: +44 (0)1689 883 020
Fax: +44 (0)1689 871 392
contact@msinstruments.co.uk
www.msinstruments.co.uk

ISO 9001 SCS cert. No. 980010
286-001-stationaryinfantrytarget-advancedturning - Jul-17

The information in this document is correct at the stated time. MS Instruments Ltd has a policy of continuing development and reserves the right to make design changes/improvements to the products.