



Sectors

Resolute Accuracy



HARDWARE/SOFTWARE

- Graphical representation of target area is displayed instantly/
- Two sets of three optical sensors generate the signals from the shots.
- Rigid metal framework provides mounting platform for arrays and the control unit.
- Permanent records of firing data can be stored on disk or printed for subsequent analysis.
- Wide range of calibres can be detected, with a similarly wide velocity range.
- Operational distances of up to 5km from the Processor are possible using a radio link.
- Optional GPS can be provided as integral part of the system, to give accurate target location and event time (using UTC).

OPTICAL TARGET TYPE 570

This precision electronic target provides developers, manufacturers and testing organisations with an accurate means of checking the performance of weapons and ammunition outdoors by measuring the co-ordinates of shots passing through the target area.

Being an Optical Target, the Type 570 is unaffected by wind and thus gives a high degree of accuracy of half-calibre or better. The instantaneous accuracy of this target makes it greatly desirable for all outdoor firing.

PRECISION ELECTRONIC TARGET

SPECIFICATION

MEASUREMENT		
Active Target Area	• 2.5m x 2.5m for 5mm calibre	• 4m x 4m for 120mm calibre
Position Accuracy	• 5mm for 5mm calibre	• 10mm for 120mm calibre
Angular Accuracy	• 0.4° Elevation	• 1° Azimuth
Velocity Accuracy	0.2%	
PROJECTILES		
Projectile Velocity	50m/s to 1500m/s at target	
Projectile Calibre	5mm to 120mm	
Rate of Fire	• 1000rpm for 50m/s	• 12000rpm for 1500m/s
POWER/COMMS		
Power	12V DC	
ENVIRONMENT		
Operating Temperature	-10°C - +50°C [14 F - 122 F]	
Humidity	The units are fully sealed	
Rain	The system operates in light rain	
Wind	Accuracy is not affected by wind	
DIMENSIONS		
L x W x H	300mm x 600mm x 2300mm [11.8in x 23.6in x 90.6in]	
Weight	50kg [110.2lbs]	

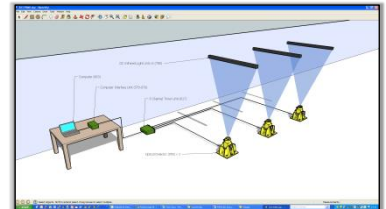
USED WITH



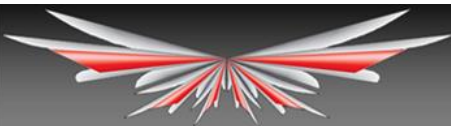
Meteorological Station Type 574



Universal Receiver Type 681-700



Projectile Velocity Measuring System



MS INSTRUMENTS Range Consultancy

Precision, Expertise, Quality

- Professional Bespoke Range Designs
- State-of-the-Art Product Rendering
- Only the Latest Standards



MS Instruments Ltd.

Unit 4, Ravensquay Business Centre, Cray Avenue
 Orpington, Kent, BR5 4BQ, United Kingdom
 Tel: +44 (0)1689 883 020
 Fax: +44 (0)1689 871 392
 contact@msinstruments.co.uk
 www.msinstruments.co.uk

ISO 9001 SCS cert. No. 980010
 570-opticaltarget.doc - Oct-17

The information in this document is correct at the stated time. MS Instruments Ltd has a policy of continuing development and reserves the right to make design changes/improvements to the products.