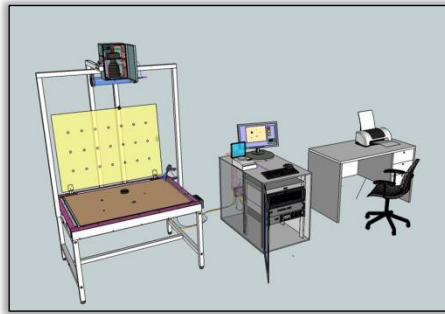




Accurate, Robust, and Easy Fragment Measurement



STRAWBOARD IMAGER TYPE 603

The MS Instruments Strawboard Imager offers an easy and accurate means of fragment measurement which greatly reduces trial time costs.

A clever integrated system removes all the problems associated with the large number of boards and larger number of fragments that is classically seen in strawboard trials; the result is a smoother, more accurate analysis of fragment distribution.

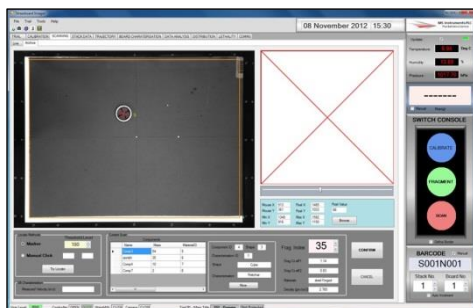
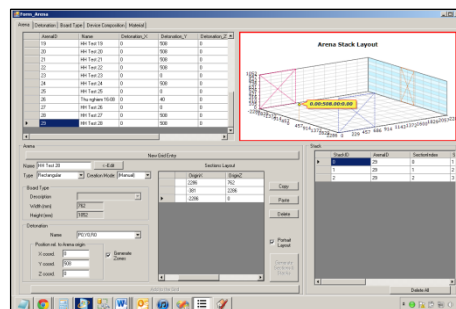
The system's capability can be extended by combining with fragment velocity measurement equipment to enable full evaluation of munitions lethality.

Every aspect of the imager, down to the base processing algorithms, has been carefully reworked to ensure the most accurate recording of every hole. Hence, the MSI Strawboard Imager is a system of the highest quality that performs consistently, and provides easy, precise fragment analysis for every range in which it operates.

SMOOTH AND ACCURATE ANALYSIS

Clear and Thorough Analysis:

- High-resolution imager
- Configurable for any detonation
- Modular structure.

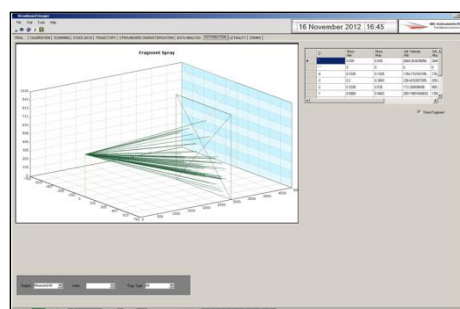


Intuitive Operation:

- Software wizard for easy set-up
- User-friendly graphical interface
- Data export in multiple formats

Accurate and Easy Data Recording:

- Robust and ergonomic design
- Automated fragment analysis
- Comprehensive report generation.



HARDWARE

- **High resolution digital camera, optimised lens, and LED light panel** are used by the system's imager, enabling fast and accurate scanning of strawboards.
- **Calibration plate** is lowered after setup to give accurate hole measurement.
- **Robust, ergonomic function buttons** ensure the system can be used wearing gloves.
- **'Fragment' button** is pressed when the fragment is removed from the board and placed on the digital scales, to record the fragment mass and location.
- **Barcode labels** can be affixed to stacks when removing from the arena. These are automatically read during scanning to ensure location traceability.

SOFTWARE

- **All trial setup parameters** (including strawboard arrangement, detonation device, time, date, officers etc.) are simply configured, stored, and recalled.
- **User-friendly graphical interface** helps the operator monitor scanning sequence, and ensures all data is correctly recorded.
- **All data** is automatically saved and can be recalled and exported as required.
- **Additional software functions** generate statistical data as listed in ITOP 4-2-813 (for example).
- **Stack penetration trajectory analysis** enables velocity/energy estimates for some fragment types.

SPECIFICATION

POWER/COMMS	
Power	110 – 240 VAC (5A)
PC (MINIMUM)	
Processor	P-4 Dual core 3.0 GHz
Memory	2 GB
Hard Drive	500 GB
DVD ROM/RW	DVD/CD-RW Combo
Printer	HP Laserjet
Monitor	24in
UPS	2kVA
Operating System	Windows 7 Pro
Software	Application + Office Pro

IMAGER (MINIMUM)	
Pixels	2352 x 1728
L x W	1036mm x 782mm [40.8in x 30.8in]
Resolution	<0.5mm
DIMENSIONS	
L x W x H	0.95m x 1.25m x 2.15m [37.4in x 49.2in x 84.6in]

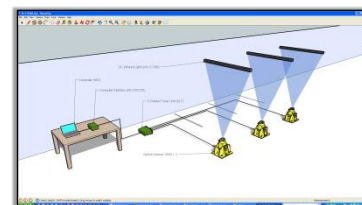
USED WITH




Universal Receiver Type 681-700



Triple-Channel Remote Timer Unit Type 817





Projectile Velocity Measurement System




MS INSTRUMENTS Range Consultancy

Precision, Expertise, Quality

- Professional Bespoke Range Designs
- State-of-the-Art Product Rendering
- Only the Latest Standards



MS Instruments Ltd.

Unit 4, Ravensquay Business Centre, Cray Avenue
Orpington, Kent, BR5 4BQ, United Kingdom
Tel: +44 (0)1689 883 020
Fax: +44 (0)1689 871 392
contact@msinstruments.co.uk
www.msinstruments.co.uk

ISO 9001 SCS cert. No. 980010
603-strawboardimager - Jul-17

The information in this document is correct at the stated time. MS Instruments Ltd has a policy of continuing development and reserves the right to make design changes/improvements to the products.