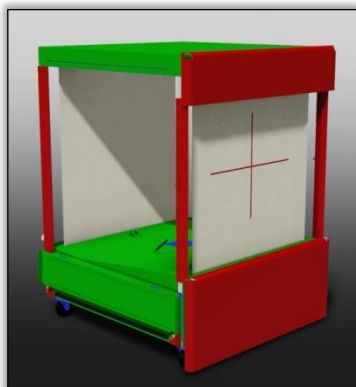


Rapid and Reliable Shot Pattern Analysis



SHOT PATTERN ANALYSER TYPE 616

This paper based system offers an efficient and reliable method for shot pattern analysis. The digital scanning technology enables automated shot hole measurement with high accuracy over a large detection area. The shot pattern data is then transferred wirelessly to the control PC or laptop where trial statistics and user-customised reports are automatically generated. Its robust design comes with protective armour and is suitable for indoor and outdoor use, and has the added benefit of folding down for transportation.

ROBUST AND VERSATILE

HARDWARE

- **Camera and Lighting** technology ensures accurate shot position recording in all lighting conditions.
- **Protective Armour** prevents accidental shot damage and reduces ricochet risk.
- **Folding design** allows the target to be moved to multiple locations.

SOFTWARE

- **BallisticsDB** software package designed specifically for trial management and hardware control.
- **Trial Statistics** are permanently stored in database for future reference.
- **User Configurable** reports and spreadsheet are automatically generated.

SPECIFICATION

POWER/COMMS	
Power	100-240 VAC
Comms	2.4GHz Wifi
DETECTION	
Detection Area	120 x 120 cm
Measurement Time	30 secs.
Feature Size (min.)	1 mm
Scan Time	30 secs.
Set-Up Time	2 mins.
ENVIRONMENT	
Operating Temperature	0°C - 50°C [32°F - 122°F]
Humidity	95% non-condensing
IP Rating	54
Shot Protection	Up to #0000 Buckshot, 3 ½ Mag. At 20m
DIMENSIONS	
L x W x H	1.4m x 1.4m x 2.1m [55in x 55in x 83in]
L x W x H (folded)	1.4m x 1.4m x 0.9m [55in x 55in x 35in]

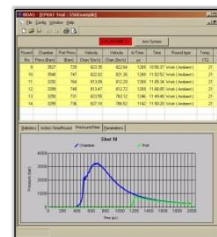
USED WITH



Remote-Control Transceiver Type 573



Range Processor Type 663



Ballistics DB Control Software Type 950-571

MS Instruments Ltd.

Unit 4, Ravensquay Business Centre, Cray Avenue
Orpington, Kent, BR5 4BQ, United Kingdom
Tel: +44 (0)1689 883 020
Fax: +44 (0)1689 871 392
contact@msinstruments.co.uk
www.msinstruments.co.uk

ISO 9001 SCS cert. No. 980010
616-shotpatternanalyser – 15

The information in this document is correct at the stated time. MS Instruments Ltd has a policy of continuing development and reserves the right to make design changes/improvements to the products.