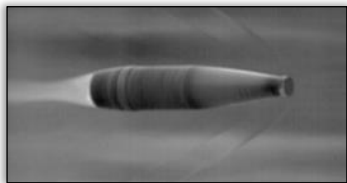




Revolutionary Projectile Imaging



MINI FLIGHT-FOLLOWER TYPE 632

The Mini Flight-Follower has been developed to meet the high-speed-imaging needs of modern ammunition designers, extending MSI's range of unique, specialised imaging solutions.

The system is a complete Turn Key system that consists of a computer controlled triggered rotating mirror positioned in front of a High Speed Video camera. The mirror is programmed to rotate at the correct speed, such that the

camera will "follow" the projectile.

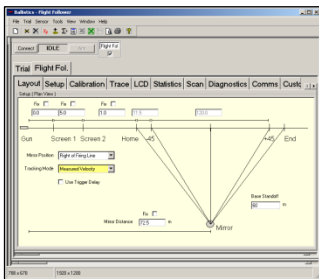
Typically, the system will track the trajectory for 100m or more as the mirror scans a 90° arc, providing high quality images of the projectile in flight.

This new, compact design is a complete package that gives high performance along with its convenience. The combined functionality of the hardware and software greatly simplifies system operation without limiting flexibility.

HIGH QUALITY IMAGING

Simple and Versatile Equipment:

- Simplified range surveying
- Accommodates a variety of cameras
- High mechanical stability



Efficient and Optimised System:

- Software wizards
- In-built instrumentation
- Real-time mirror position control

Time and Effort Saving:

- Easy, quick set up
- Remote operation
- Automatic adjustment to data entries



HARDWARE

- **Velocity profile modes** (*Predicted or Measured*) with single or dual trigger inputs and built-in trigger delay.
- **Integrated high speed camera.**
- **Mirror Halt function** stops the mirror in mid-flight for impact analysis.
- **Trackable projectiles** include practically anything that is travelling too fast to observe.

SOFTWARE

- **Remote Operation via dedicated MS Windows software** (with set-up wizards) ensures optimised set-up.
- **Low cost integrated Turn Key System.**

SPECIFICATION

CONFIGURATIONS		Tracking Angle	100° total, 90° tracking
Operation Modes	<ul style="list-style-type: none"> • Predicted or Measured velocity modes • Flash detector (standard) or 2 x Skyscreen (optional) • 1 x Multi-trigger (up to 256 inputs) 	Angular Tracking Accuracy	Better than 0.1°
		Flatness	¼ Wave
		*Scan Ratio = Projectile Velocity ÷ Stand-off Distance	
ENVIRONMENT			
Power	100 – 240V, 50 – 60Hz	Operating Temperature	0°C - 40°C [32F - 104 F]
DIMENSIONS			
Trigger Output	<ul style="list-style-type: none"> • 1 x +5V TTL in synchronism with the start of the mirror scan 	L x W x H (mirror)	135mm x 100mm (135mm x 90mm useable area)
Communication	GigE/Wireless LAN (optional)	L x W x H (housing)	745mm x 335mm x 300mm [29.5in x13.5 in x12in]
Camera		Max camera dimensions	127mm x 127mm x 127mm [5.0in x 5.0in x 5.0in]
Resolution	Typically 2560 x 1440 (pixels)	Weight	26kg [57lbs]
Frames Per Second	Up to 3000 frames per second at full resolution	SOFTWARE	
Memory	8GB	Standard	Ballistics DB
MIRROR			
Scan Ratio	4-40		

CAN BE USED WITH




Multiple Trigger System Type 630-320



Flash Detector Type 768



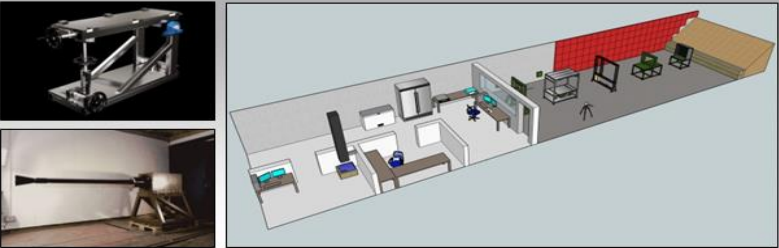
Optical Detector Type 858



MS INSTRUMENTS Range Consultancy

Precision, Expertise, Quality

- Professional Bespoke Range Designs
- State-of-the-Art Product Rendering
- Only the Latest Standards



MS Instruments Ltd.

Unit 4, Ravensquay Business Centre, Cray Avenue
Orpington, Kent, BR5 4BQ, United Kingdom
Tel: +44 (0)1689 883 020
Fax: +44 (0)1689 871 392
contact@msinstruments.co.uk
www.msinstruments.co.uk

ISO 9001 SCS cert. No. 980010
632-miniflight-follower.docx - Dec-23

The information in this document is correct at the stated time. MS Instruments Ltd has a policy of continuing development and reserves the right to make design changes/improvements to the products.