



PPS

PARTITION PANEL SYSTEMS

PARTITION PANEL SYSTEMS
announce the delivery of their
three CQB reconfigurable
partition systems to a
customer within Asia Pacific.
The systems were ordered by
Cubic Defense.

**MODULAR
CLOSE QUARTER BATTLE
PARTITION TRAINING SYSTEMS**

CONTENTS

4 Recreate scenarios

6 PPS Lite

8 PPS Heavy Duty

10 Entry Panels

12 PPS Ballistic

14 PPS Container Packs

16 CQB Training House

18 Accessories

19 Contact

THE PPS RANGE



PPS Lite

PPS Heavy Duty

PPS Ballistic

PPS PARTITION PANEL SYSTEMS

Mission success is dependent on training that replicates real world scenarios.

Challenging and realistic training is proven to result in operational success. Partition Panel Systems (PPS) have been designed by Barrie Pegrum (Sector Associates), an engineer with 30 years of range design experience, building and testing weapon ranges and Close Quarter Battle (CQB) facilities. The system has been produced in consultation with Special Forces and Police Firearms specialists. The results are products that meet the end users' requirements for flexible and dynamic firearms training.

PPS offers affordable, modular training houses, providing the option to upgrade your existing facility into a challenging training environment.

What makes PPS different?

Modular - Our panels can be configured into any layout or scenario, allowing your team to rehearse in replicas of current or future operations.

Fast - The PPS unique retractable castor wheel base system allows heavy panels to be easily and rapidly moved by just two people. Lite panels can be moved by a single person. Multi-room layouts can be built in just hours.

Transportable - All our systems come in specially configured shipping containers, allowing them to be easily moved to new training locations or overseas bases.





SCENARIOS

- Rapidly recreate any building floorplan
- Scenario shows Lite panels
- Scenario shown can be built in 60 minutes

RECREATE SCENARIOS

Partition Panels can be configured into any layout to replicate the operational environment.

Our range of panel systems are designed to be transportable in shipping containers, allowing you to quickly set up a training facility at overseas locations or forward mounting bases.

PPS offers three panel types:

- Lite
- Heavy Duty
- Ballistic

The scenario opposite shows the Heavy Duty or Ballistic panel system.





Retrofitting

Partition Panels are an economical and easy way to upgrade existing training facilities. We advise on ways to optimise and improve training space and design plans to enhance facilities for live and non-live fire training.





COLOURS AVAILABLE:

Black	
White	
Grey	
Beige	

This scenario shows Lite panels



PPS: LITE

PPS Lite panels are a lightweight, dynamic, modular system for Police and Military training.

The panels are designed for paint marker and CQT ammunition training. PPS Lite is the most rapidly re-configurable CQB partition system available and can convert any indoor or outdoor space into a realistic training facility.

Key points

- Each panel weighs 50kg (110lbs)
- Rapid construction by one person
- Fire retardant material
- Optional door and window entry frames
- Quick and firm locking system
- Quick and easy storage
- Stable and weatherproof
- Optional windows / ship portholes / hatches
- No lifting gear or existing facility required

Dimensions Width: 1.15m (3ft 9in) Height: 2.165m
(7ft 1in) Thickness: 150mm (6in)





**PPS RETRACTABLE
CASTOR WHEELS**

This scenario shows Heavy Duty panels
which can be decorated as required

PPS: HEAVY DUTY



PPS Heavy Duty panels are made for intense CQB training with paint marker and CQT ammunition.

Manual method of entry breaching techniques can be practised on the door and window entry panels. Heavy Duty panels can be used on their own, or combined with Ballistic panels, to provide a cost effective method of creating a large live firing training complex.

Key points

- Designed to be used with Lite or Ballistic panels
- Sturdy 'climb-through' windows
- Identical size and shape to Ballistic panels
- Door entry panels for manual breaching (MOE) techniques
- Entry Panels can be blanked off to alter routes
- Users' own doors can be fitted
- PPS retractable castor-wheel base
- Laser alignment device is included to assist in setting out the scenario
- Available in shipping container packs
- Rugged laminate surfaces withstand paint-marker and CQT ammunition
- Optional wall colours to create realistic scenarios



Dimensions Width: 1.2m (4ft) Height: 2.165m (7ft 1in) Thickness: 150mm (6in) Weight: 125kg (275lbs)



BREACHING DOORS

- Reversible left/right in/out doors
- Door and handle variations
- Sacrificial timber frame

ENTRY FRAMES

Lite Entry Frame

- Lite Entry Frame
- Two-man portable
- Reversible in/out door
- Left and right hinges
- Suitable for manual MOE breaching
- Weighted base supports for impact resistance



Heavy Duty and Ballistic Entry Frame

- Suitable for manual MOE breaching
- Sacrificial timber door frame for breaching
- Unique PPS retractable castor-wheel base for easy movement
- Entry frame can be converted into a window or hatch
- Use your own door types



A 3D architectural rendering of a prison cell block. The cells are arranged in a grid, separated by light-colored wood-grain panels. Each cell contains a toilet, a sink, a bed with a purple mattress, and a small table with a chair. A central hallway provides access to each cell. A large inset in the top right corner shows a close-up of the bullet trap system, which consists of a wooden panel with a grey metal frame and a grey metal door. The text "PPS BULLET TRAP SYSTEM" is displayed in the top right corner of the inset.

**PPS BULLET
TRAP SYSTEM**

This scenario shows Ballistic panels which are normally available in grey Polyboard or beige ply, however we can apply any colour finish requested

PPS: BALLISTIC



Ballistic panels are designed for 360° live firing scenario training with 5.56mm and all lower-energy ammunition.

Each Partition Panel has the unique PPS retractable castor wheel system for quick reconfiguration with just two people - no lifting gear required.



Safety

Recognising the potential hazards live-fire training activities present, ballistic integrity and safety qualities are foremost in the design. PPS Ballistic panels have been designed to contain all splashback within a trap system, preventing any hazards of ricochet, bullet splatter or shoot-through.

Key points

- Polyboard facings available
- Armoured steel core
- Bullet trap system prevents splashback
- Stops all grades of 5.56mm (M193, M855 NATO, frangible)
- Replaceable plywood / Polyboard outer facings
- All panels are reversible for extended life
- Bulletproof joints and corners
- Door entry panels for shotgun and manual MOE techniques
- Laser alignment device included to assist in setting out the scenario
- User's own doors can be fitted
- Available in shipping container packs

Dimensions Width: 1.2m (4ft) Height: 2.165m (7ft 1in) Thickness: 150mm Weight: 290-360kg dependent upon ballistic duty (640-795lbs)

CONTAINER PACKS

All PPS panels are available in 6m (20ft) shipping containers.

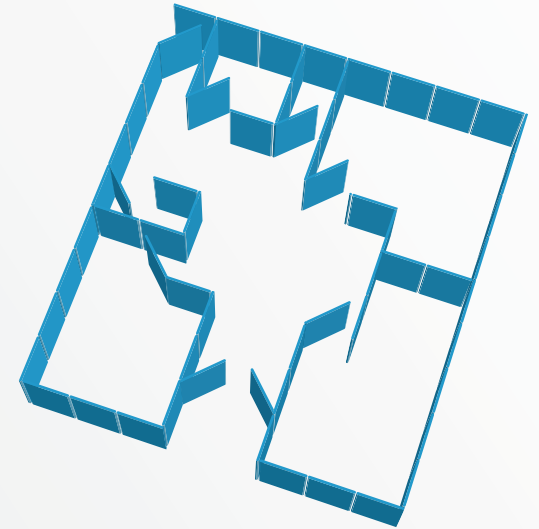
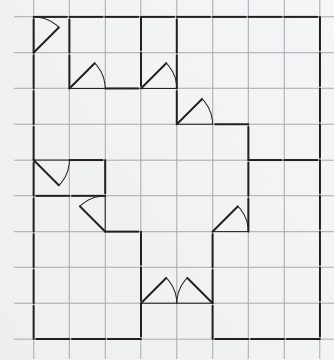
Container packs are specially configured for all PPS panels and provide an ideal outdoor storage facility for the system. Container packs are available with layout plans which include a set number of door and window panels. Custom container packs are available on request.

6m (20ft) Container Pack

- Lite panels: 65 panels - 75m (245ft) of wall
- Heavy Duty and Ballistic panels: 30 panels - 36m (120ft) of wall
- Loading trolley and access ramps are provided
- Includes PPS accessories

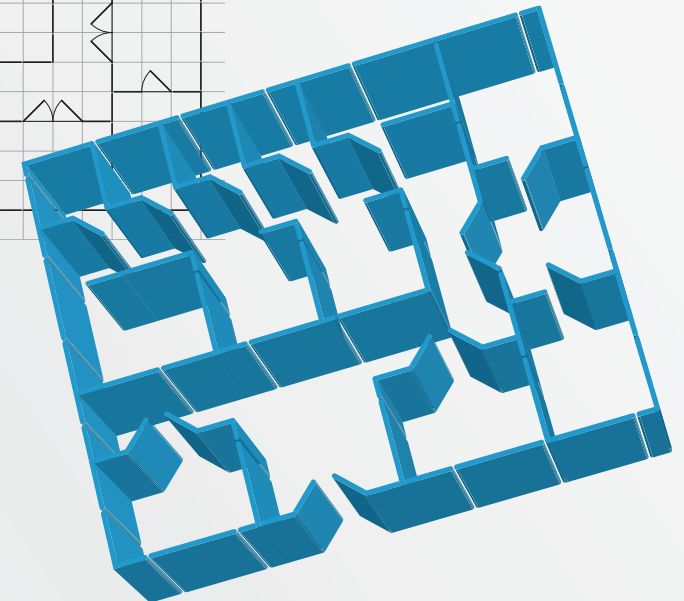
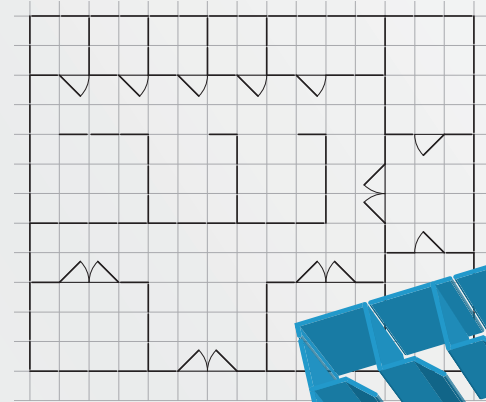
65 Panels - House

1 container of Lite panels



130 Panels - Offices

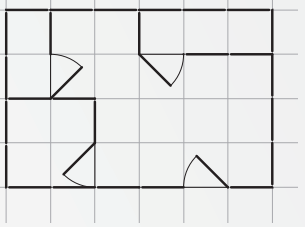
2 containers of Lite panels



PPS BALLISTIC/HEAVY DUTY EXAMPLE PLANS

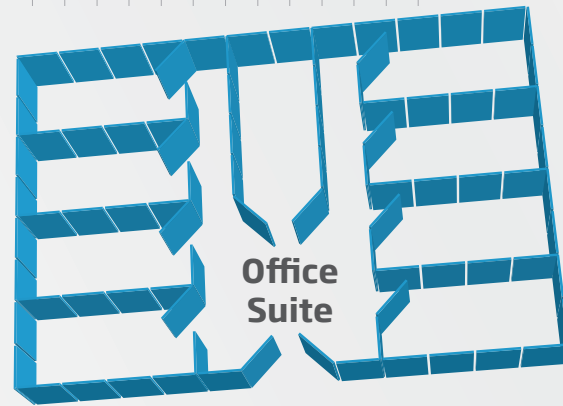
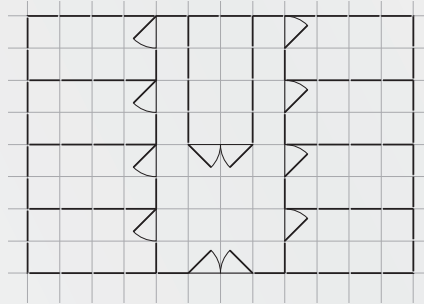
30 Panels - Shop

1 container



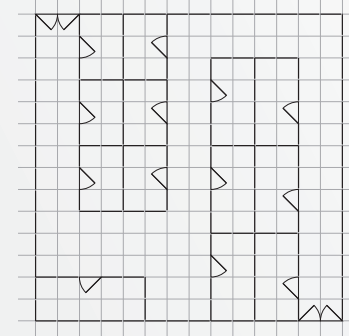
90 Panels - Office Suite

3 containers



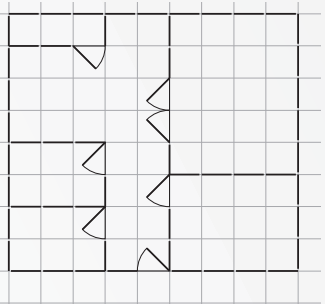
150 Panels - Shopping Mall

5 containers



60 Panels - Apartment

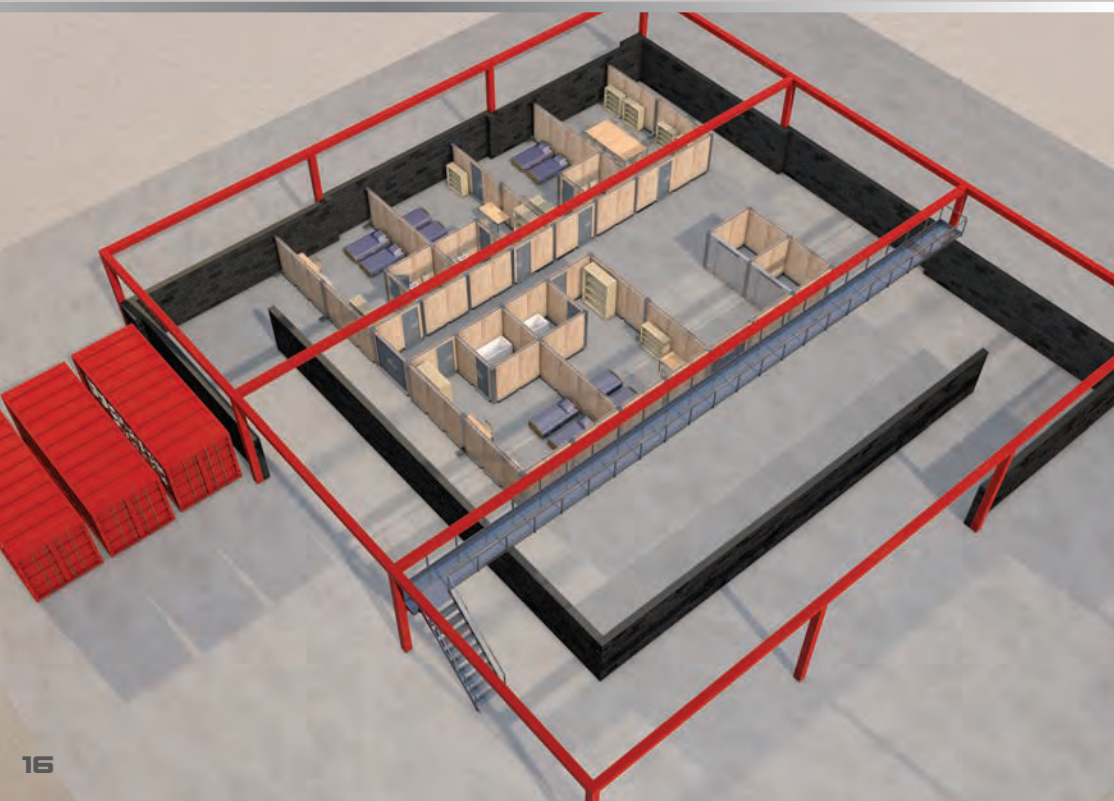
2 containers



120 Panels - Hotel Floor

4 containers





CQB TRAINING HOUSE



PPS Close Quarter Battle (CQB) Training Houses are designed to create a cost-effective training facility for live fire training.

The Training House can be easily and quickly built by PPS or your choice of local contractor. PPS panel container packs are then supplied with sufficient panels to suit the size of the Training House.

There is an option for supplying the Training House components in shipping containers that can be erected very quickly and, when necessary, dismantled and re-erected elsewhere.

Overseas Deployments

The Training House is the ideal solution for military forces deployed overseas. A realistic training facility can be built quickly and economically, enabling the force to maintain operational readiness, or where Special Forces

units are required to train indigenous forces in environments where adequate facilities are not available.

The PPS live-fire Training House consists of a durable all-weather structure and bulletproof rubber block outer walls, fixed on a flat concrete or asphalt base. Options that can be incorporated within the Training House include:

- 30m zeroing range
- Instructor overhead viewing gantry
- PPS storage containers to house the panels and other equipment when not in use
- Troop briefing room/rest areas
- Controllable lighting
- CCTV

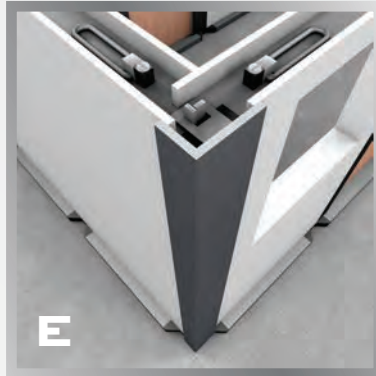


PPS: ACCESSORIES



A: Drill

The unique castor wheel system in the base of the Ballistic and Heavy Duty panels is operated by a high torque drill. Both systems come with the drill, attachments and long-life batteries.



B: Guide trolley

The guide trolley is provided to satisfy Health and Safety when moving panels into position. The trolley also contains attachment points for the drill, laser system and panel layout plans.

C: Laser alignment device

Heavy Duty and Ballistic panel systems come with the laser alignment device. The laser attaches to the top of the panel to assist in setting out the walls.



D: End post

The end posts are supplied to stabilise the free ends of walls.

E: Corner posts

Quickly lock onto the top of a corner to stabilise the panels.

F: PPS App

The PPS App, currently in development, comes with pre-loaded scenario plans and features a wi-fi control station which can be customised to control CCTV, lighting and audio systems to enhance training realism.

- Pre-loaded scenario layouts
- Customise your own floor plan
- CCTV post-action review
- Lighting system control
- Audio system control

CONTACT:

Paul Everington - +44 7720 404 622

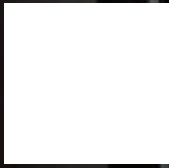
Paul.Everington@msinstruments.co.uk

Barrie Pegrum - +44 7900 255 479



**PPS PARTITION
PANEL SYSTEMS**





**PPS PARTITION
PANEL SYSTEMS**